

GENERAL NOTES

- BOLT HOLES TO STRADDLE CENTERLINES UNLESS OTHERWISE NOTED.
- VESSEL SHALL BE CLEANED AND DRAINED BEFORE SHIPPING.
- RETAP ALL CPLGS AND COVER ALL OPENINGS BEFORE SHIPPING.

| ITEM | SERVICE | DESCRIPTION | MTL | UNIT QTY | HEAT NO. | TOTAL QTY. |
|------|----------------|---|----------|----------|----------|------------|
| 15 | C-B | 2" x 4" LG. 3000# F.S. CPLG. T-2-B | SA-105 | 1 | | |
| 14 | VORTEX BREAKER | 1/2" R (SEE DETAIL) | SA-30 | 1 | | |
| 13 | C-1 & C-6 | 1/2" 3000# F.S. THR'D. CPLG. | SA-105 | 2 | | |
| 12 | C-2 & C-3 | 3/4" 6000# F.S. THR'D. CPLG. | SA-105 | 6 | | |
| 11 | C-4, C-7 | 1" 6000# F.S. THR'D. CPLG. | SA-105 | 5 | | |
| 10 | N-3 | 3" SCH. 40 PIPE X 0'-8 1/16" | SA-106 B | 1 | | |
| 9 | N-3 | 3" 150# R.F.S.O. FLG. | SA-105 | 1 | | |
| 8 | N-2 | 2" SCH. 40 PIPE X 0'-8 1/16" | SA-106 B | 1 | | |
| 7 | N-2 | 2" 150# R.F.S.O. FLG. | SA-105 | 1 | | |
| 6 | SHELL | 42" O.D. x .375" WALL PIPE X 20'-0" | SA-106 | 1 | | |
| 5 | GASKET | 1/16" THK. 75# A536S. RING | JM-60 | 1 | | |
| 4 | BOLTING | 1 1/2" x 6" LG. STUD BOLTS W/ 2 HH NUTS EA. | SA-105 | 48 | | |
| 3 | HEAD | 1/2" R x 4 1/8" DIA. | SA-30 | 1 | | |
| 2 | HEAD | 42" 75# R.F. BLIND FLG. | SA-105 | 1 | | |
| 1 | HEAD | 42" 75# R.F.S.O. FLG. | SA-105 | 1 | | |

| MK. | NO. REQD. | SIZE | RATING | FLANGE | HEX | COVER | BOLTS | GASKET | NO. PNO | OLET | CPLG | I.S. PROJ. (MIN) AT L. | O.S. PROJ. AT L. | TYPE | I.S. FILLET A. | O.S. FILLET B. | PAD FILLET C. | SERVICE |
|-----|-----------|--------|-----------|--------|-----|-------|-------|--------|---------|------|------|------------------------|------------------|------|----------------|----------------|---------------|----------------------|
| | 1 | 2" | 3000# | 15 | | | | | | | | | | G | 1/4" | | | FLAME DETECTOR |
| | 2 | 1" | 6000# | 11 | | | | | | | | | | T | 1/4" | | | STACK CONN'S (PLUG) |
| | 1 | 1 1/2" | 3000# | 13 | | | | | | | | | | T | 1/4" | | | VAPOR OUTLET |
| | 2 | 1" | 6000# | | | | | | | | | | | | | | | COIL INLET & OUTLET |
| | 3 | 1" | 6000# | 11 | | | | | | | | | | T | 1/4" | | | DRAIN CONN'S. |
| | 4 | 3/4" | 6000# | 12 | | | | | | | | | | T | 1/4" | | | TEMP. CONN'S. |
| | 2 | 3/4" | 6000# | 12 | | | | | | | | | | T | 1/4" | | | LIQUID LEVEL |
| | 1 | 1 1/2" | 3000# | 13 | | | | | | | | | | T | 1/4" | | | STILL INLET |
| | 1 | 42" | 75# R.F. | 1 | 6 | | | | | | | | | J | 5/16" | 5/16" | | BODY FLG. |
| | 2 | THR'D. | | | | | | | | | | | | | | | | FILL W/ CAP |
| | 1 | 3" | 150# R.F. | 9 | 10 | | | | | | | | | S | 1/4" | | | PUMP SUCTION |
| | 1 | 2" | 150# R.F. | 7 | 8 | | | | | | | | | S | 1/4" | | | PUMP RETURN |
| | 1 | 3" | 150# R.F. | | | | | | | | | | | | | | | STILL COLUMN W/ COIL |

* HYDRO-TEST COIL TO 1500 PSI PRIOR TO INSTALLING BLD. FLG.

DESIGN NOTES

VESSEL CONSTRUCTED IN ACCORDANCE WITH _____

STAMP REQUIRED NO SYMBOL _____

INSPECTION BY _____

NATIONAL BOARD NO. _____ MFG. S/N _____

MAX ALLOWABLE WORKING PRESSURE (NEW AND OLD) LIMITED BY _____ OF _____ PSIG @ _____ °F

MIN. DESIGN METAL TEMPERATURE _____ °F @ _____ PSIG

HYDROTEST PRESSURE OR 200 PSIG CORROSION ALLOWANCE NONE

JOINT EFF.: SHELL _____ % HEADS _____ %

RADIOGRAPH/OTHER NDE _____

POSTWELD HEAT TREATMENT _____

ESTIMATED WEIGHTS: EMPTY _____ FULL (WATER) _____

PAINT _____

WPS NO. _____

| | | | |
|-----|-----------------------------|----|--------------|
| 2 | AS FABRICATED | DD | 5-2-89 |
| 1 | ADDED CONN. C-3D & AS NOTED | MG | 11-28-88 |
| 0 | FOR CONSTRUCTION | CF | 11-6-88 |
| NO. | REVISION | BY | CHK APP DATE |

OPD OPTIMIZED PROCESS DESIGNS
ENGINEERS AND CONSTRUCTORS
HOUSTON, TEXAS

CUSTOMER: HUNT OIL COMPANY

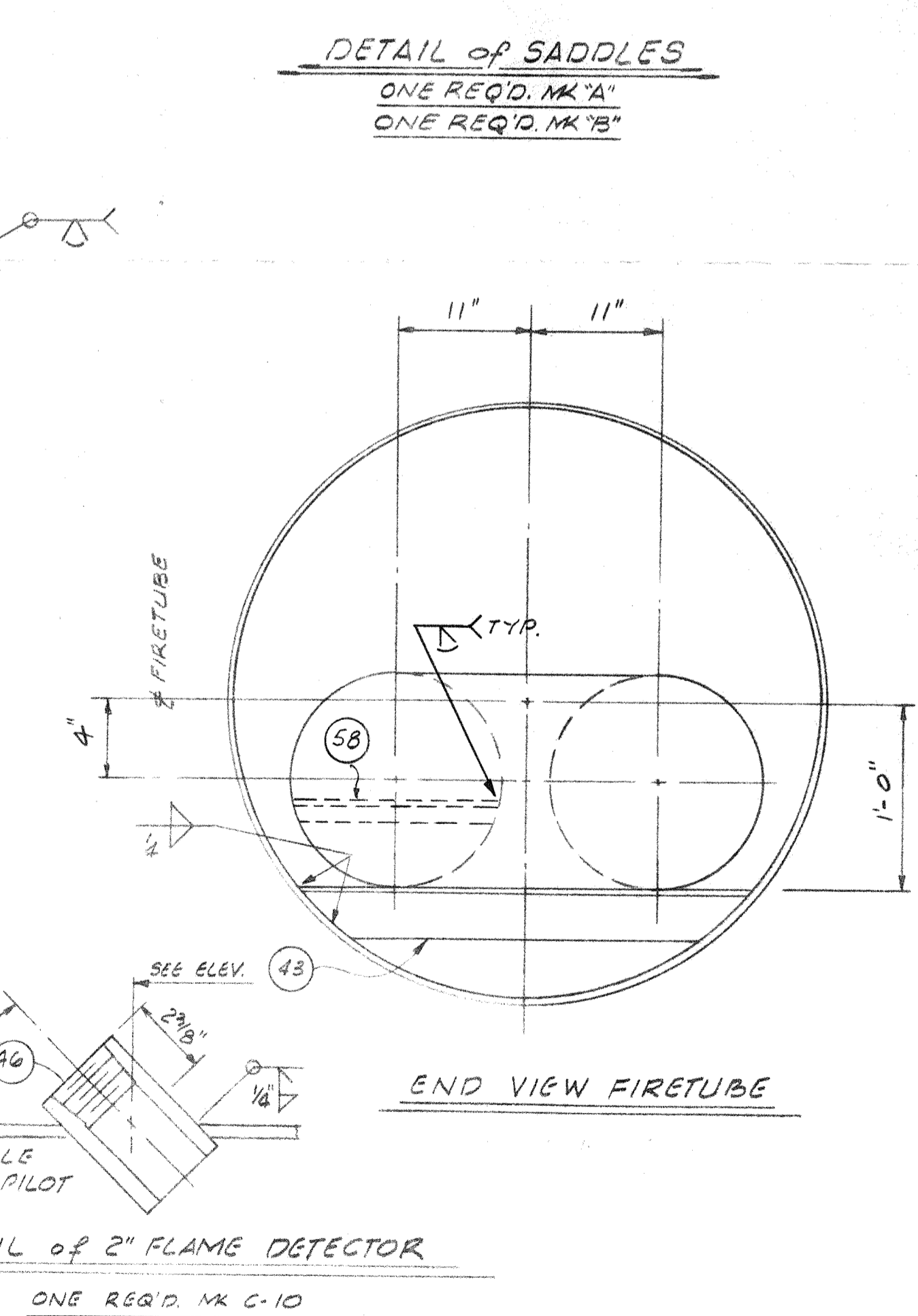
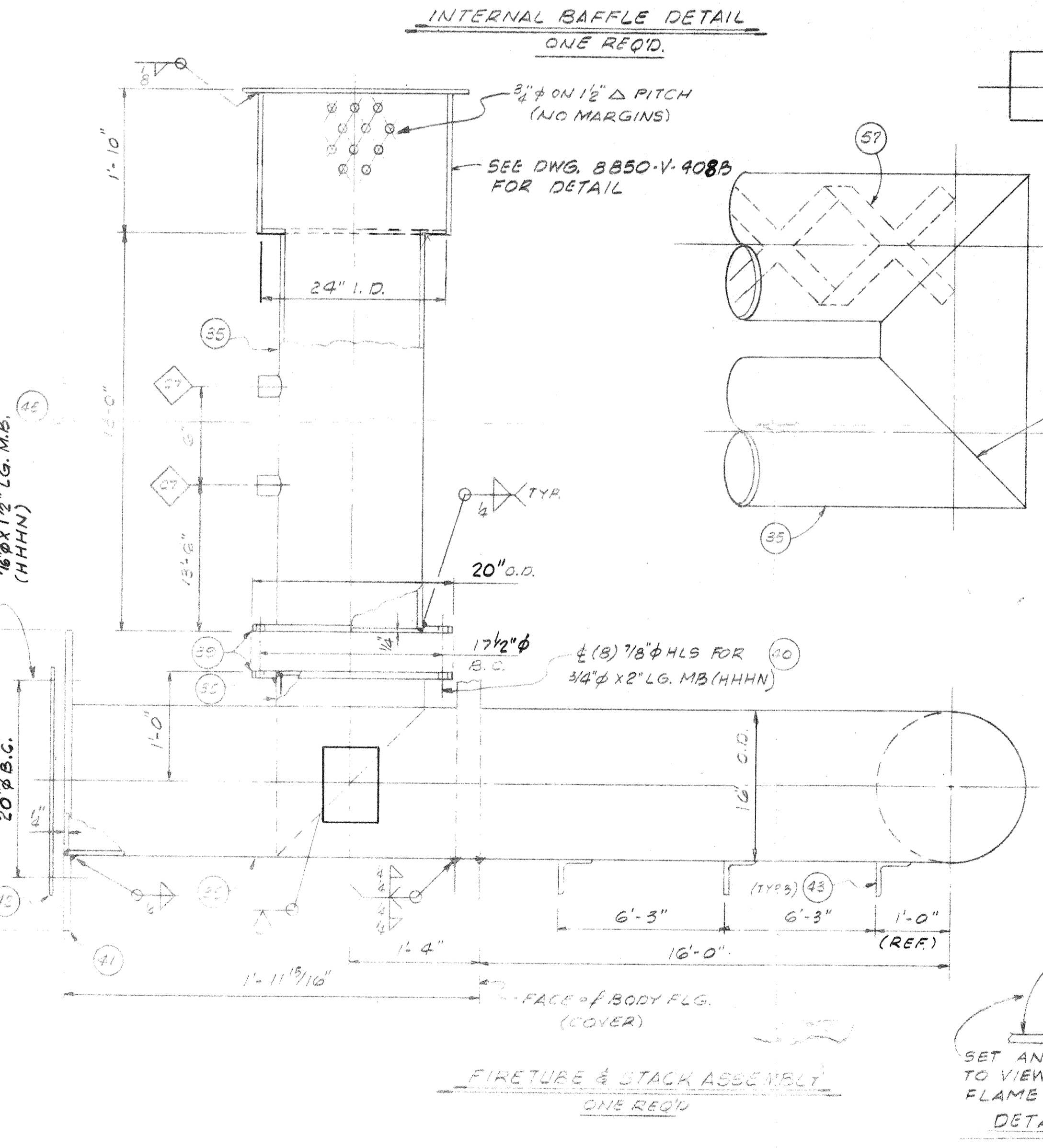
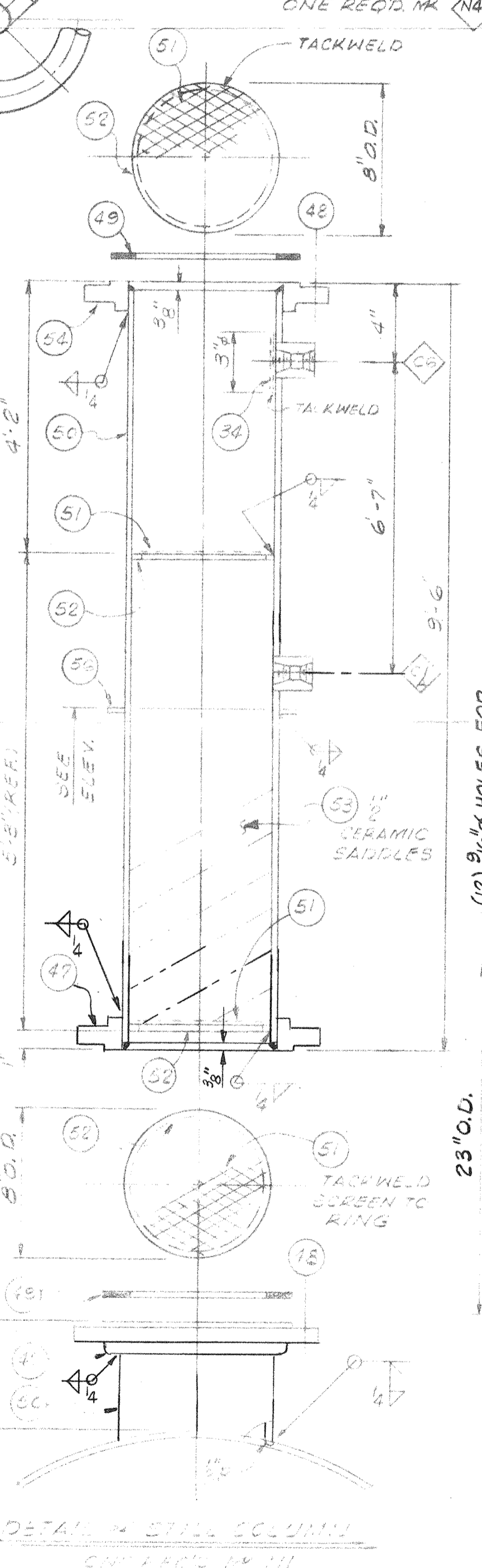
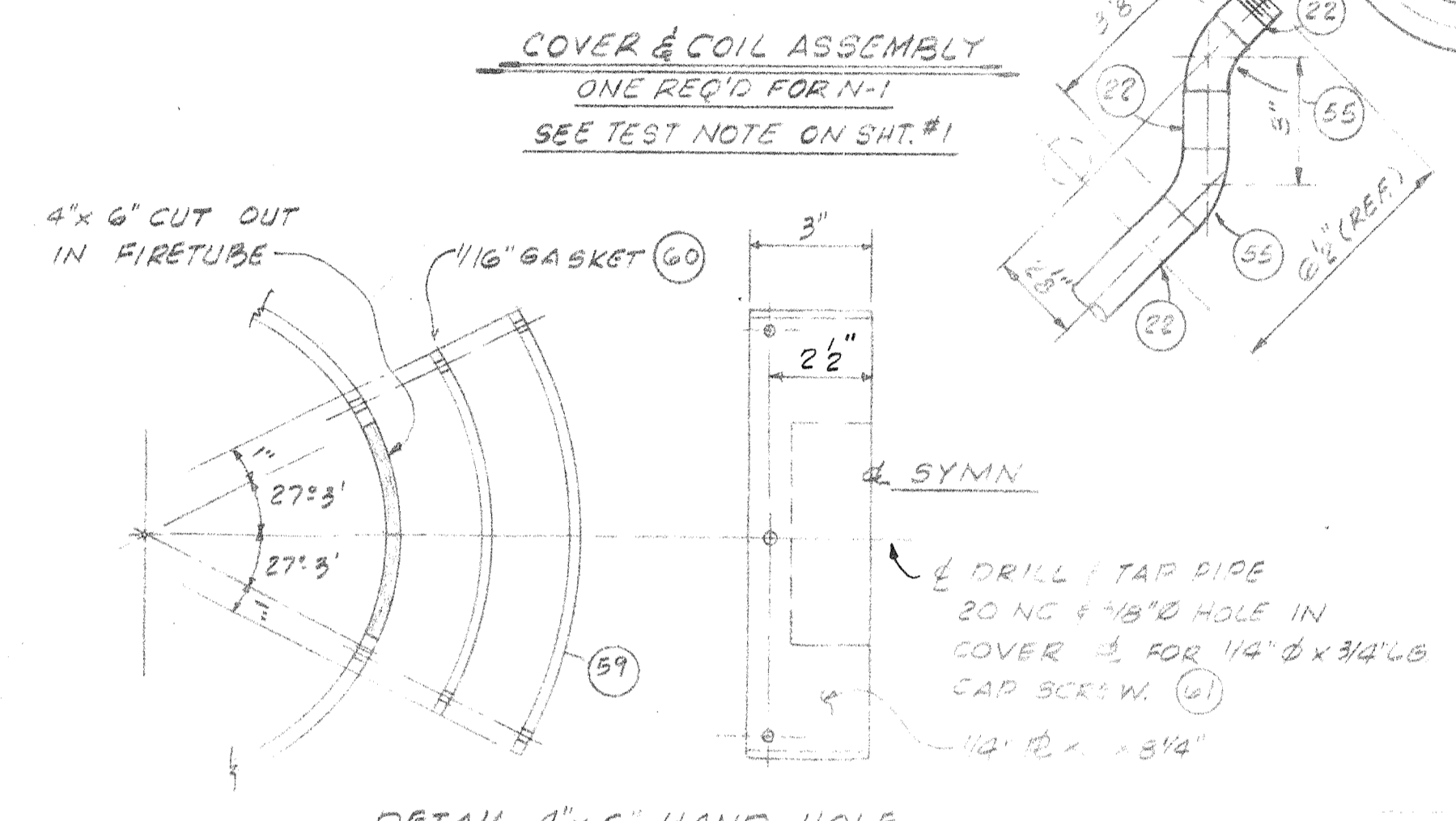
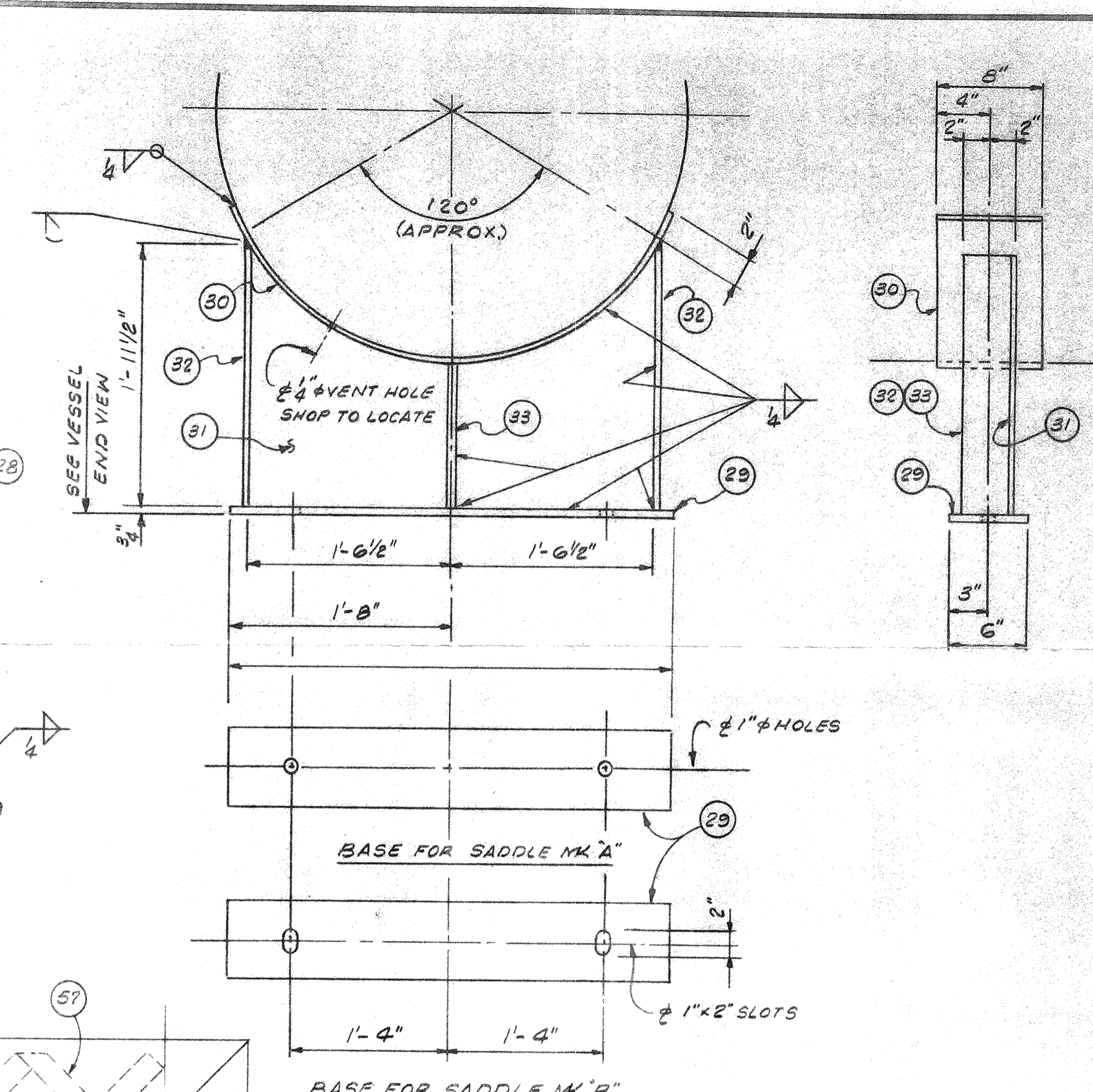
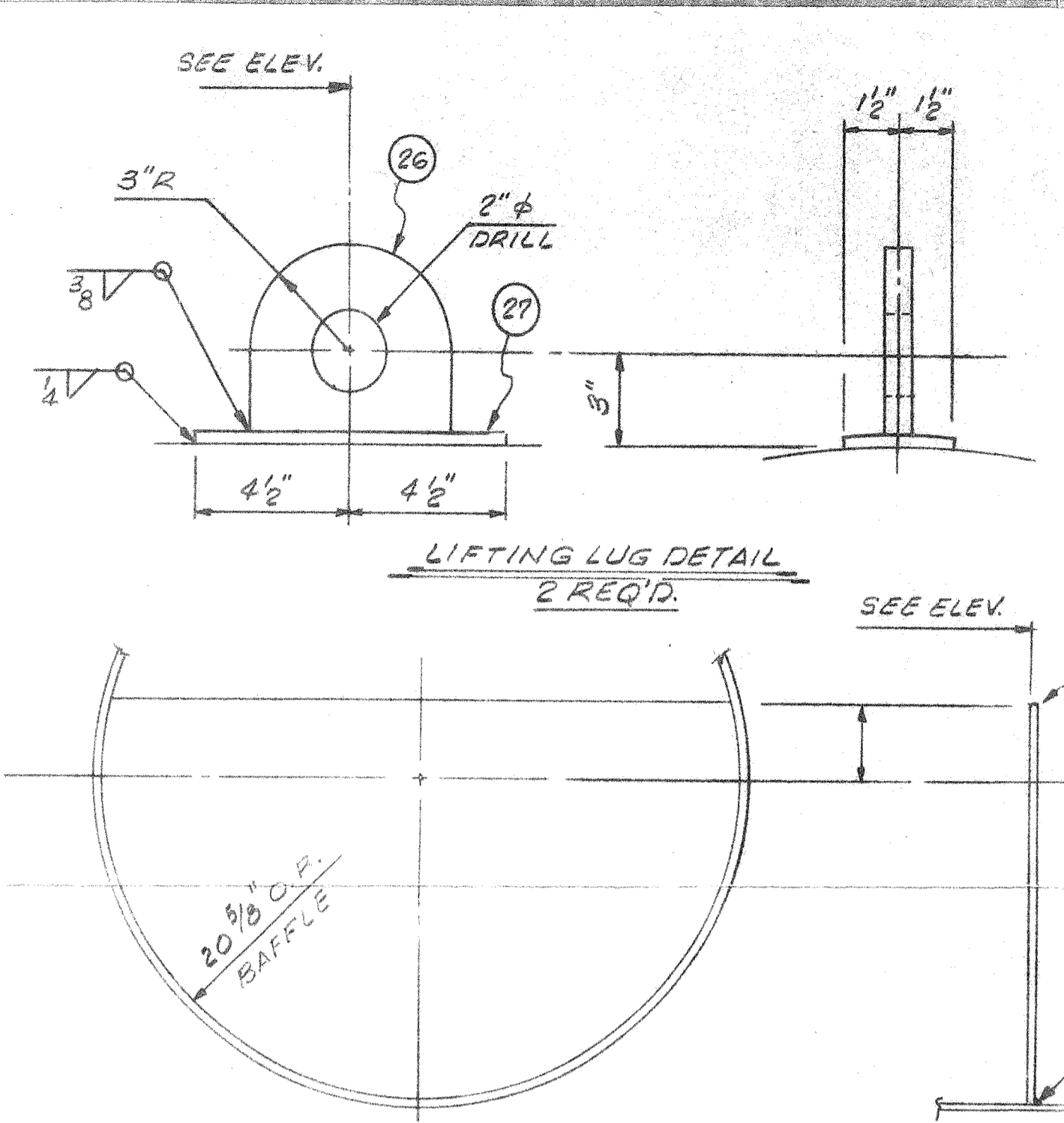
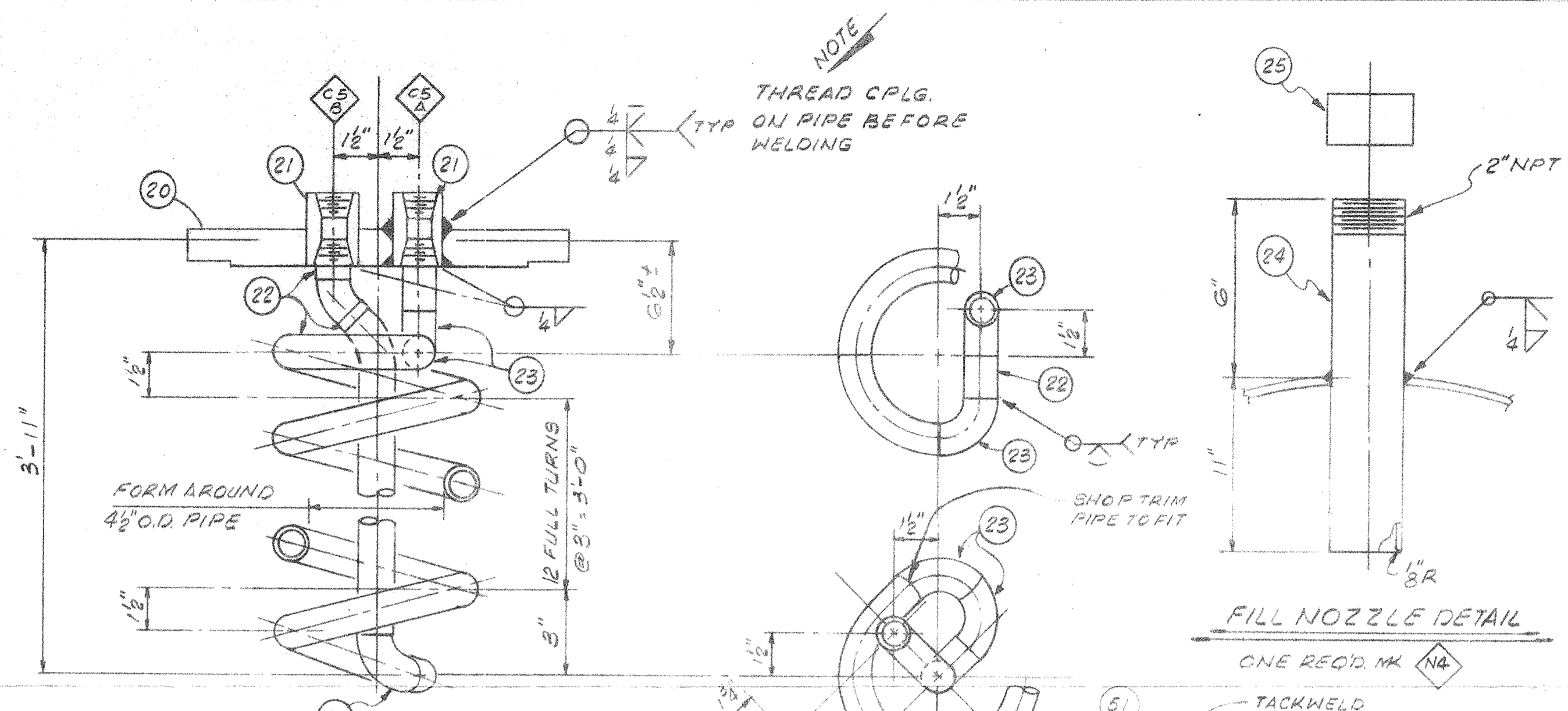
CUSTOMER REF. OPD JOB NO. 8850

42" O.D. x 20'-0" FLG. FACE-END
GLYCOL RECONCENTRATOR ITEM: GR-1

| | | |
|-------------|--------|------|
| DRAWING NO. | SHT. | REV. |
| 8850-V-408 | 1 OF 3 | 2 |

MATERIAL LIST

SCHEDULE OF OPENINGS



| ITEM | PART NUMBER | DESCRIPTION | QTY | UNIT | MATERIAL |
|------|-------------------------------|--|-----|------|----------|
| 61 | 1/4" x 3/4" LG CAP SCREW (4H) | | 6 | | C.S. |
| 60 | 1/16" THK. GASKET 6" x 3 1/4" | | 1 | | SA-100 |
| 59 | 1/4" x 6" x 8 1/4" | | 1 | | SA-36 |
| 58 | BURNER SUPT | 6 3/8" x 3 1/4" x 1-3 1/2" | 1 | | |
| 57 | FIRETUBE & STACK | TURBULATOR CE NATCO x 8'-0" (5 SECT BOLTED) | 1 | | |
| 56 | INSUL RING | 1/2" x 12 3/8" O.D. x 3 3/4" I.D. | 1 | | |
| 55 | COIL FORM | 1" SCH 40 L.R. 45° WELD BOLL | 2 | | |
| 54 | STILL COL. | 8" 150# R.F. 5.0 FLG. | 1 | | |
| 53 | PACKING | 2 CU. FT 1/2" PORCELAIN SADDLES | 1 | | |
| 52 | STILL COL. | 4" x 8" O.D. x 6" I.D. | 2 | | |
| 51 | (N-I) | 3/4" x 10 GA. EXPANDED METAL x 7 1/4" O | 2 | | |
| 50 | | 8" SCH. 40 PIPE x 9'-11 1/2" (CUTS 2 PCS) | 1 | | |
| 49 | | 1/8" THK. 8" 150# SPIRAL WOUND GASKET | 2 | | ALUMINUM |
| 48 | | 3/4" x 4 1/2" LG. B.C. STUD BOLTS w/ 1/2" HHHN | 10 | | |
| 47 | STILL COL. | 8" 150# R.F. 5.0 FLG. | 2 | | |
| 46 | | | | | |
| 45 | FIRETUBE & STACK | 16" SCH 30 PIPE x 84'-6" (CUTS 6 PCS) | 1 | | |
| 44 | | FLAME ARRESTOR BURNER PILOT | 1 | | |
| 43 | | 1/2" x 3" x 3" x 2" 9 3/4" | 3 | | |
| 42 | | 1/8" THK 23" O.D. x 16" I.D. GASKET | 1 | | |
| 41 | | 1/2" x 1/2" x 1/2" x 1/2" | 1 | | |
| 40 | | 3/4" x 2" LG. M.B (HHN) | 2 | | |
| 39 | | 1/2" x 20" O.D. x 15 1/4" I.D. | 2 | | |
| 38 | | | | | |
| 37 | | | | | |
| 36 | | | | | |
| 35 | FIRETUBE & STACK | 16" SCH 30 PIPE x 84'-6" (CUTS 6 PCS) | 1 | | |
| 34 | CHIMNEY | EXPANDED METAL 1/2" x 12 3/8" x 3 3/4" | 1 | | |
| 33 | SADDLE | 3/4" x 3 3/8" x 1'-0 7/8" | 2 | | |
| 32 | | 3/8" x 3 3/8" x 1'-11 1/2" | 2 | | |
| 31 | | 3/8" x 2 3/4" x 3'-1" | 2 | | |
| 30 | | 3/8" x 2" x 4'-4 1/2" | 2 | | |
| 29 | SADDLE | 3/4" x 3" x 3'-4" | 2 | | |
| 28 | BAFFLE | 3/8" x 34 3/8" x 4'-11 1/4" | 2 | | |
| 27 | LIFTING LUG | 3/8" x 3" x 3" | 2 | | |
| 26 | " | 3/8" x 6" x 2" | 2 | | |
| 25 | N/A | 2" 9000# F.S. THRID. CAP | 1 | | |
| 24 | " | 2" SCH 40 PIPE x 2'-6" | 1 | | |
| 23 | COVER & COIL FOR N-I | | 1 | | |
| 22 | " | | 1 | | |
| 21 | " | 1" 9000# F.S. THRID. CPLG | 1 | | |
| 20 | " | 8" 150# R.F. END FLG | 1 | | |

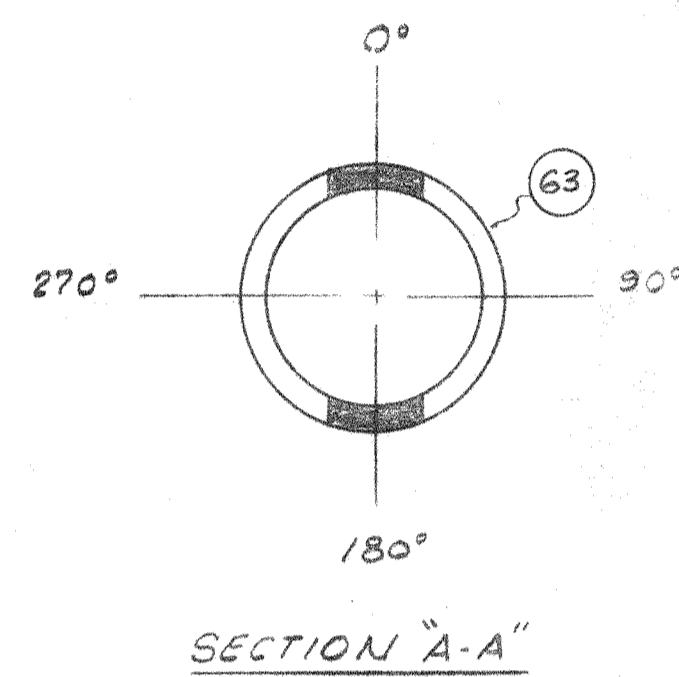
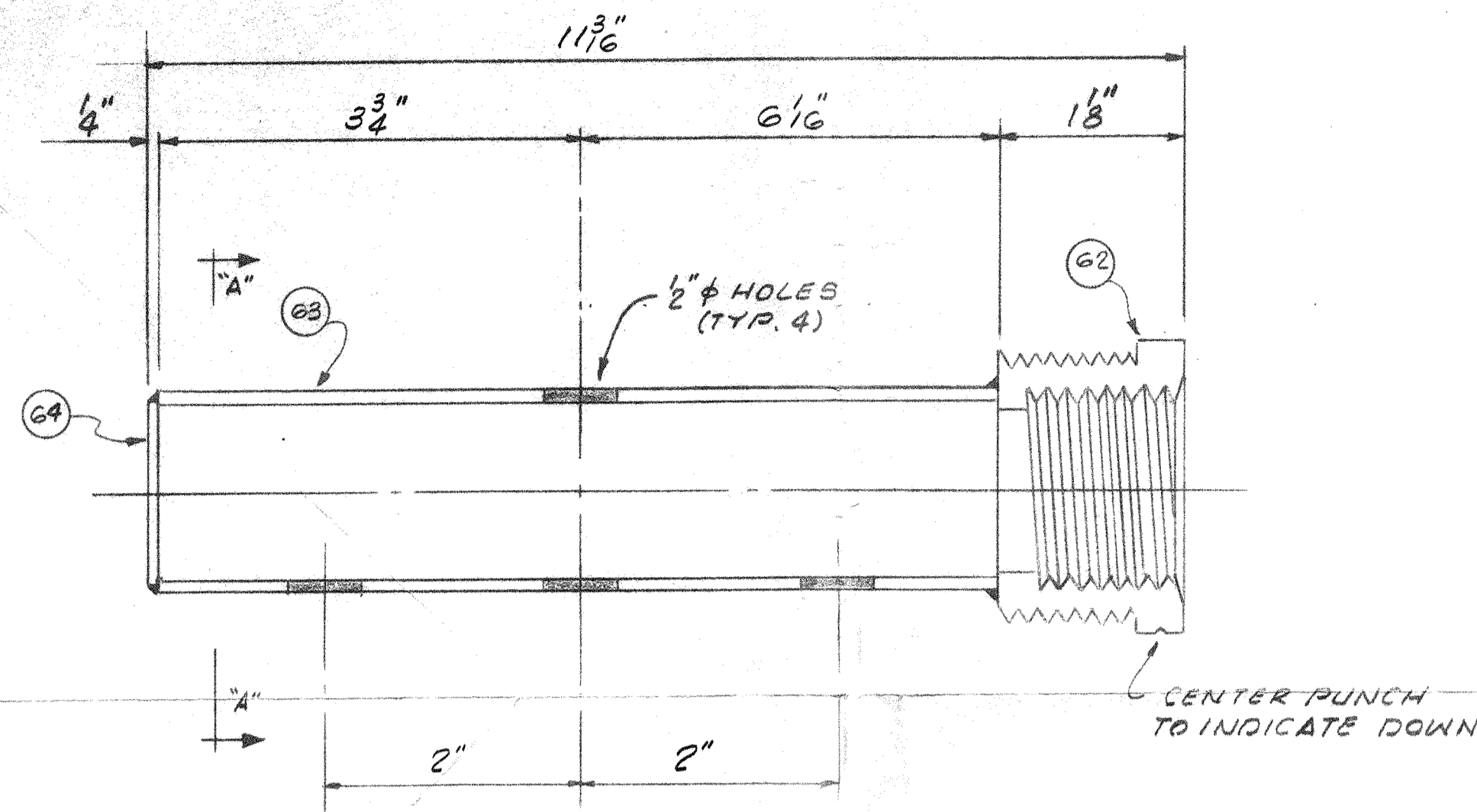
| MK | DATE | REVISIONS | BY | APP | NUMBER | REFERENCE DRAWINGS |
|----|----------|----------------------------|----|------|--------|--------------------|
| 0 | 11-16-88 | FOR CONSTRUCTION | | G.F. | | |
| 1 | 12-1-88 | REMOVE HOLD | | M.G. | | |
| 2 | 12-14-88 | REVISED BURNER STACK FLGS. | | D.J. | | |
| 3 | 3-2-89 | 45 FABRICATED | | D.D. | | |

OPD

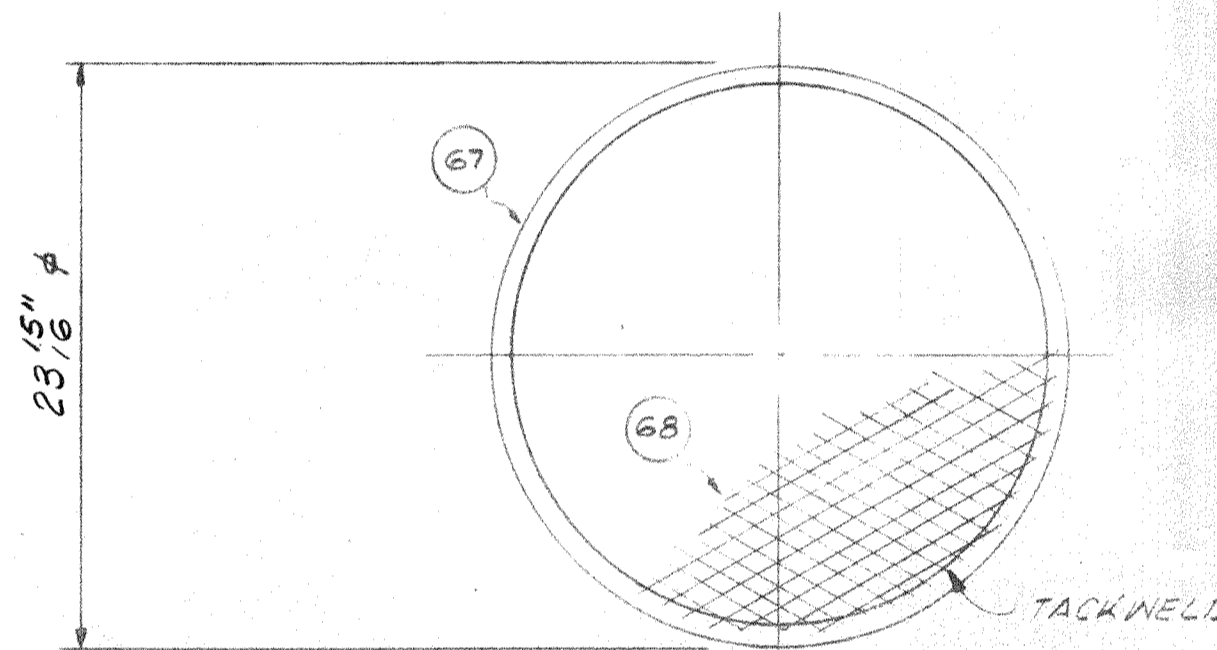
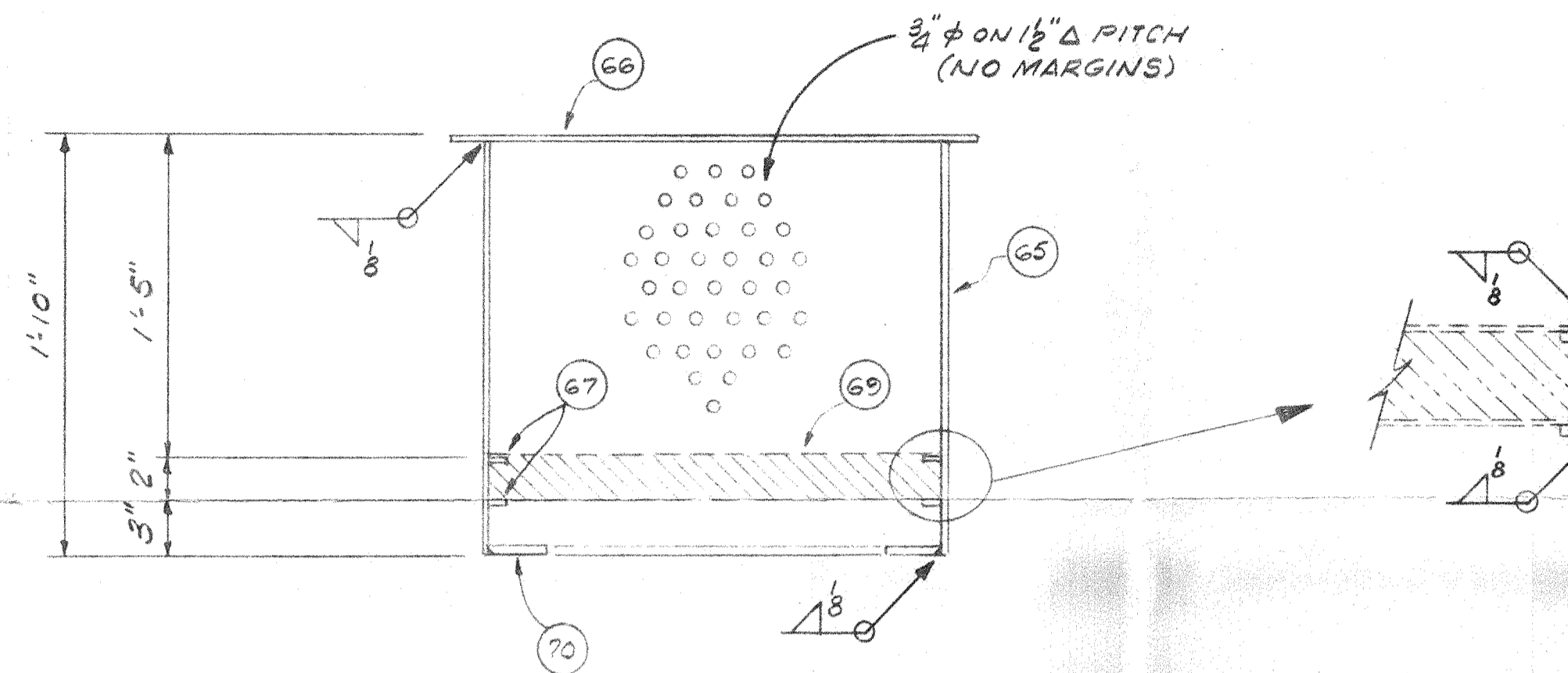
OPTIMIZED PROCESS DESIGNS
ENGINEERS AND CONSTRUCTORS
HOUSTON, TEXAS

HUNT OIL COMPANY
MIDLAND, TEXAS

| DETAILS FOR O.D. x FACE-END | | | |
|----------------------------------|--------------|-------------|-----|
| GLYCOL RECONCENTRATOR ITEM: GR-1 | | | |
| SHEET 2 of 3 | | | |
| DES | SCALE NONE | JOB 8850 | REV |
| DR | FILE | DWG. NO. | |
| GH | | | |
| APP | DATE 11-4-88 | 8850-V-408A | 3 |



SPARGE PIPE DETAIL FOR OPENING MK-C1



WIND DEFLECTOR DETAIL

| ITEM | PART NUMBER | DESCRIPTION | MT'L | UNIT QTY. |
|------|---------------|--|---------|-----------|
| 70 | WIND DEFLECT. | 4" ID 23 3/4" O.D. x 15 1/4" I.D. | SA-36 | 1 |
| 69 | | 23 3/4" φ x 2" TH. 31/PT3 WIRE MESH | 304 S.S | 1 |
| 68 | | 3/4" x 10 GA. EXPANDED METAL x 23 3/8" φ | CS | 2 |
| 67 | | 4" ID x 23 3/8" O.D. x 22 3/4" I.D. | SA-36 | 2 |
| 66 | | 1/2" ID x 28" DIA | SA-36 | 1 |
| 65 | WIND DEFLECT. | 5" ID x 20" x 6' 3 3/8" (PERFORATE & ROLL) | SA-36 | 1 |
| 64 | SPARGE NOZZ. | 4" ID x 1 1/8" φ | SA-36 | 1 |
| 63 | " | 1" SCH. 80 PIPE x 9 1/2" | SA-106 | 1 |
| 62 | SPARGE NOZZ | 1/2" x 1" HEX HD. BUSHING | SA-105 | 1 |

MATERIAL LIST

| MK | DATE | REVISIONS | BY | APP | NUMBER | REFERENCE DRAWINGS |
|----|----------|------------------|------|-----|--------|--------------------|
| 0 | 11-16-88 | FOR CONSTRUCTION | CAF | | | |
| 1 | 3-7-89 | AS FABRICATED | D.D. | | | |

OPD

OPTIMIZED PROCESS DESIGNS
ENGINEERS AND CONSTRUCTORS
HOUSTON, TEXAS

HUNT OIL COMPANY
MIDLAND, TEXAS

DETAILS FOR 42" O.D. x 20' 0" FACE-END

GLYCOL RECONCENTRATOR ITEM:GR

SHEET 3 of 3

| DES | SCALE | JOB |
|-----|---------|-------------|
| CAF | NONE | 8850 |
| DR | FILE | DWG. NO. |
| CAF | | 8850-Y-408B |
| APP | DATE | REV. |
| | 11-9-88 | 1 |